

How does the ear work?

What to use:

The Ear Model

What to do:

1. Tap the box near the ear model as shown:

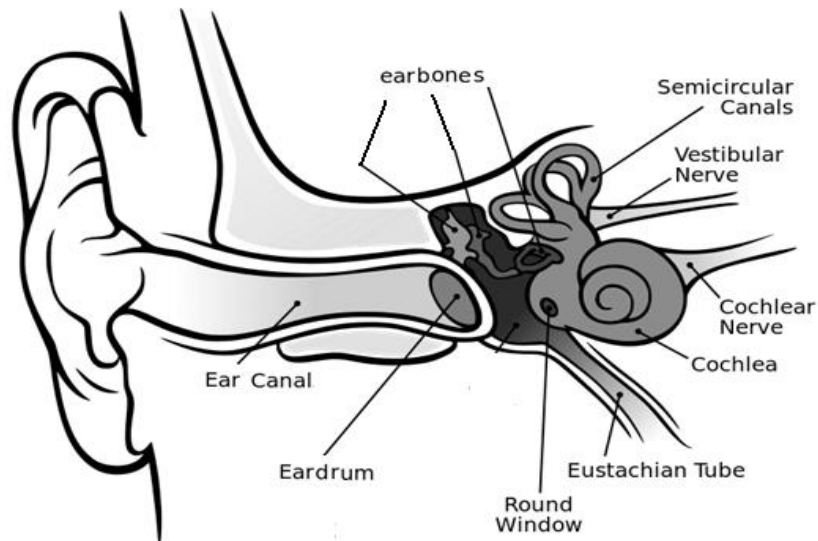


- a. What happens to the plastic sheet when the box is tapped?

- b. What happens to the pingpong ball when the box is tapped?

- c. Why is this happening to the ball and the plastic sheet?

2. Study the picture below.



Adapted from:

[file:///C:/Documents%20and%20Settings/user/My%20Documents/Downloads/Chapter%C2%A036.%C2%A0Sensory%20Systems%20\(1\).pdf](file:///C:/Documents%20and%20Settings/user/My%20Documents/Downloads/Chapter%C2%A036.%C2%A0Sensory%20Systems%20(1).pdf)

a. Which part of the ear is represented by the plastic sheet?

b. What happens to this part (ear part asked in a.) when we hear a sound?

c. Which part of the ear is represented by the pingpong ball?

d. What happens to this part (ear part asked in c.) when we hear a sound?

e. Doctors tell patients that they should not insert cotton buds into the ear canal. Explain why they give this advice.
